



**DCD**

**PRODUCTS S.R.L.**

---

**Representante Exclusivo**

**Lartigau 1152 • (1875) Wilde  
Avellaneda • Buenos Aires  
Tel.: 4217-1223 • Fax 4217-1226  
e-mail: [dcdventas@speedy.com.ar](mailto:dcdventas@speedy.com.ar)**

*Simple handling:*

## **The versatile combination cannula**

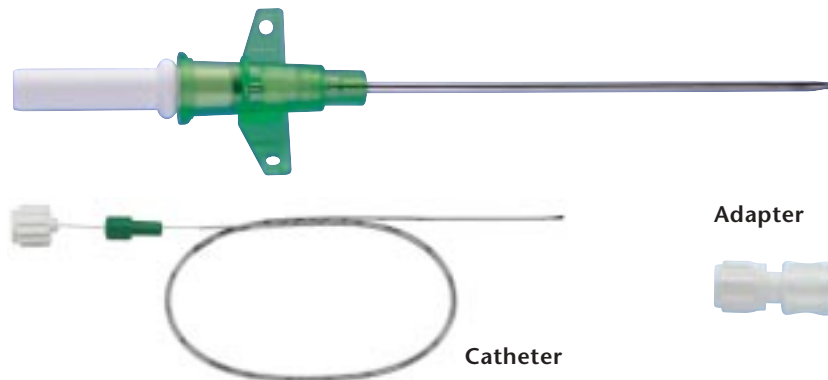
Versatility and safety are the first priorities for the combination cannula of PAJUNK. It combines the advantages of "Single Shot Technology" with the technology of continuous catheters. Anesthesia can be prolonged by the use of the permanent cannula or the use of a flexible catheter.

The combination cannula consists of a solid steel stylet and a permanent cannula made of plastic material that is perfectly fitted to the stylet.

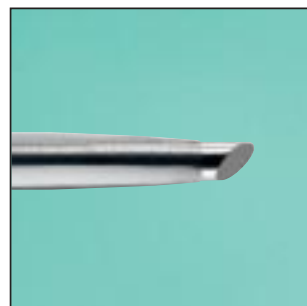
Due to the rounded edges at the tip of the steel stylet (45° grind) the cannula can be pushed forward through the subcutaneous tissue very precisely and without the use of pressure; contamination with and spreading of infected skin material into deeper layers is almost ruled out. The click phenomenon occurring upon the penetration of the vessel nerve sheath provides additional safety. A stimulator can be attached to the connector of the cannula. The positioning of the tip of the needle is verified accurately by dot-like electric stimulation.

### **Plexus Cannula Set for axillary plexus anesthesia**

Combination cannula



**Conical shape:**  
The sturdy plastic material can neither be pushed back, nor can it be turned inside out, thereby reducing the risk of imperfect punctures to an absolute minimum.



The steel stylet and the permanent cannula made from Teflon are optimally fitted to each other: The conical shape of the permanent cannula provides for an even and flush transition from the surface of the cannula to the surface of the stylet. A unique grind for stimulation with utmost precision: The tip of the steel stylet is ground to an angle of 45 degrees, and it has rounded edges. This blunt grind causes a distinctly perceivable resistance before the vessel nerve sheath is penetrated. A clear "click" during the process of the puncture indicates, that the cannula was positioned correctly. A notch at the end of the handle of the steel stylet indicates the orientation of the ground surface.

**Plexus**

*Safe and reliable:*

# The Plexolong-Set according to Seldinger

The uncomplicated catheter – technology for reliable results: Even if you only seldom use plexus anesthesia, you can achieve success safely with the Plexolong-Set according to Seldinger. The set consists of a rounded hollow needle made of high-grade stainless steel equipped with a permanent cannula made of plastic material, a flexible metal spiral that serves as a guidance stylet (Seldinger wire), and a graduated catheter.

The Plexolong-Set according to Seldinger makes regional anesthesia safer. The fascia sheath is pressed against the vessel nerve cord

with the blunt cannula tip without perforating the fascia sheath. The contractions instigated by this indicate the correct positioning of the cannula. The following click phenomenon upon "penetrating" the vessel nerve sheath will additionally confirm correct positioning. The position of the cannula can be once more checked by using impulses from the stimulator.

The safe positioning of catheters having a relatively large volume in comparison to the puncture is made feasible by utilizing dilatation technology with the Plexolong-Set.

## Plexolong-Set according to Seldinger



Catheter

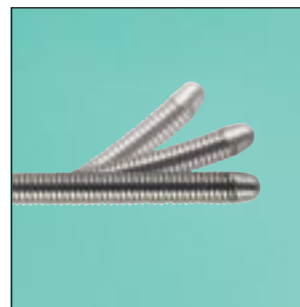
### Coiled guide wire

The graduation gives information concerning the positioning of the catheter. If the catheter has

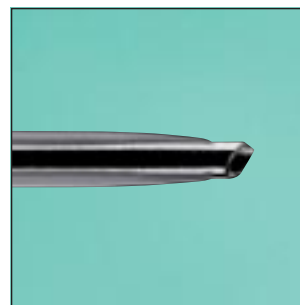
reached the tip of the guidance wire, the proximal marking will be even with the connector.



Plexolong cannula



The flexible tip of the guiding probe prevents injuries during advancement of the probe.



Conical shape: The sturdy plastic material can neither be pushed back, nor can it be turned inside out, thereby reducing the risk of imperfect punctures to an absolute minimum.

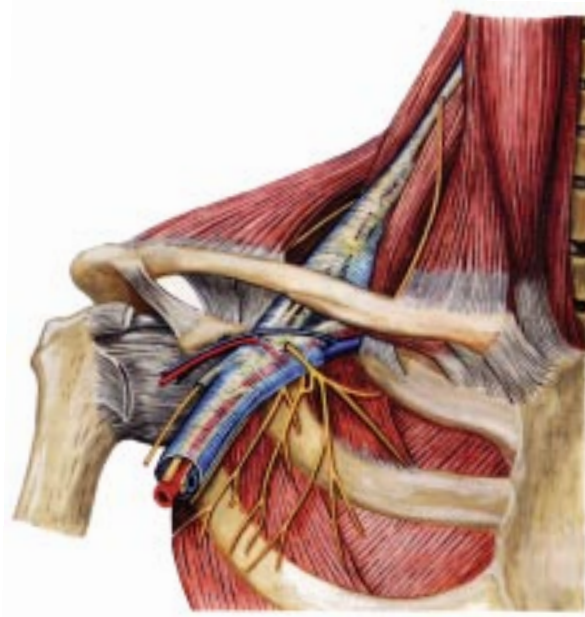
*Continuously effective:*

## **Plexus- and nerve block-anesthesia with uncoated cannulae**

The combination cannula and the Plexolong-Set according to Seldinger are used for short-time and for continuous blockades of the axillary brachial plexus and the lumbar plexus (3-in-1 block).

Indications for the use of Plexolong catheter technology are in particular

- interventions which considerably exceed the periods of effectiveness of conventional local anesthetics
- the effective treatment of post-operative pain
- permanent blockades for the duration of several weeks in therapy of conditions of severe pain
- the continuous blockade of the sympathetic nervous system



### Combination cannulae/sets

Product	Order no.
Combination cannula, 16 G x 3 1/4" (83 mm)	0001151-34
Combination cannula, 18 G x 3" (75 mm)	0001151-38
Combination cannula, 18 G x 2" (51 mm)	0001151-32
Plexus cannula set with combination-needle, plastic cannula 16 G x 83 mm, catheter 19 G x 50 cm, adapter	0001151-35
Plexus cannula set with combination-needle, plastic cannula 18 G x 51 mm, catheter 20 G x 50 cm, adapter	001151-32A
Plexus cannula set with combination-needle, plastic cannula 18 G x 75 mm, catheter 20 G x 50 cm, adapter	001151-38A

### Plexolong-Sets acc. to Seldinger

Product	Order no.	Pcs./Box
Plexolong stimulation cannula, 18 G x 51 mm	501151-30A	25
Plexolong stimulation cannula, 18 G x 51 mm, guidance stylet 470 mm, PE catheter 0.9 x 300 mm, 2-ml Luer syringe, 20-ml Luer syringe, injection cannula 0.50 x 25 mm, injection cannula 1.2 x 40 mm, drape 500 x 750 mm, 3 cotton swabs, fenestrate drape 570 x 650 mm	531151-30A	5
Plexolong stimulation cannula, 18 G x 51 mm, guidance style 470 mm, PE catheter 0.9 x 300 mm	541151-30A	10

#### Literature:

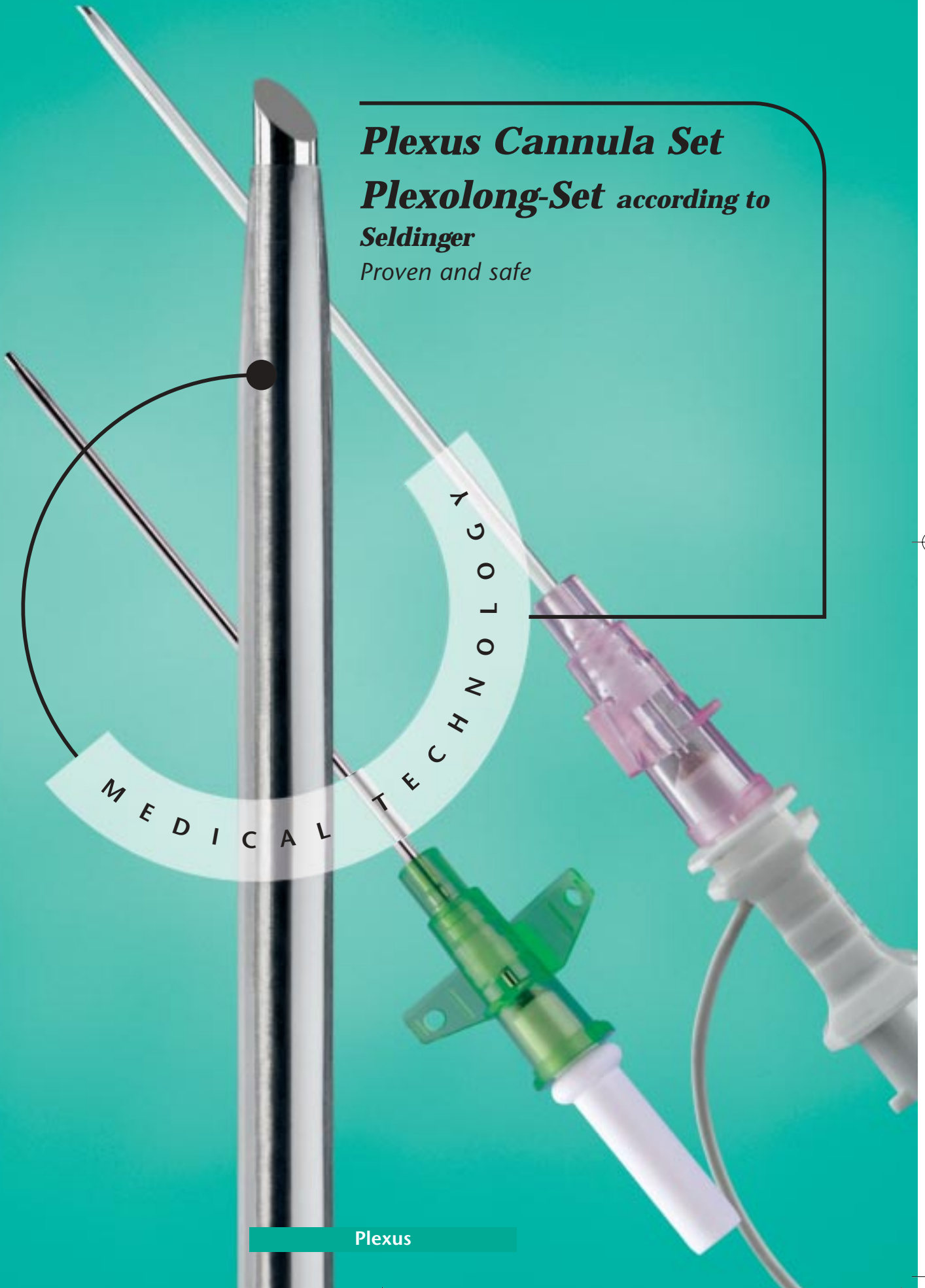
J. Büttner, R. Klose:  
Die Interpleuralblockade bei Patienten mit Rippenserienfrakturen. [The intrapleural blockade for patients with serial rib fractures.] Schmerz/Pain/Douleur 11, 1990.

J. Büttner:  
Axilläre Blockade des Plexus brachialis. [Axillary blockade of the brachial plexus.] Regional-Anaesthesie 11, pages 7-11, 1988.

**PAJUNK GmbH**  
Medical Technology  
Karl-Hall-Straße 1  
D-78187 Geisingen  
Telefon +49 (0) 77 04/92 91-0  
Telefax +49 (0) 77 04/92 91-6 00  
[www.pajunk.com](http://www.pajunk.com)

**PAJUNK®**

***Plexus Cannula Set***  
***Plexolong-Set according to***  
***Seldinger***  
*Proven and safe*



**Plexus**